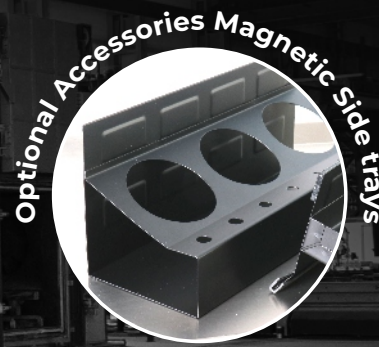


Insulated Toolkit Trolley

Trolley with Tools in Foam Profiles

PN : IH0169

Maximize Electrical Safety with our Insulated Industrial Workstation – RollerTrolley with Tools (169Pcs), your ultimate one-stop solution for a comprehensive toolkit, ensuring seamless operations, Safety and productivity in your workspace.



Available, with and without Tools

Customise trolley with your tools

ROLER TOOL TROLLEY TOOL WORKSTATION WITH SIDE CABINET



7 Pull-Out Drawers:

5 high drawers 68 mm high and 2 drawers 145 mm high;

High-Quality Materials;

A blockade preventing the drawer from slipping out automatically;

- The ability to lock the cabinet against sliding;
- Lock of the cabinet with a key, 2 keys included;
- Reinforced top made of Stainless Steel & ABS plastic.
- 30 Kg Load Bearing Cap per each Drawer.

Width	: 1095mm
Height	: 955mm
Depth	: 455mm
Approx Weight	: 52Kgs



1 Double-walled construction for rigidity



2 High Performance Roller bearing railings



5 Double Hemmed



6 Heavy-Duty Construction



3 Self-Lock Tabs



4 Seamless Design



7 Easy Mobility

INSULATED TOOLS



Description

mm

Screwdriver (6)	0.4*2.5*75, 0.5*3.0*100, 0.6*3.5*100, 0.8*4.0*100, 1.0*5.4*125, 1.2*6.5*150
Phillips Screwdriver (4)	PH0*60, PH1*80, PH2*100, PH3*150
Pozi Screwdriver (4)	PZ0*60, PZ1*80, PZ2*100, PZ3*150
TX Screwdriver (5)	T10*70, T15*80, T25*125, T30*130
Precision Screwdriver (5)	1.5*0.23*50, 1.8*0.30*50, 2.0*0.40*50, 2.5*0.40*50, 3.0*0.50*50
Precision Philips Screwdriver (2)	PH00*50, PH0*50
Nut Screwdriver (9)	6.07125, 7.0*125, 8.0*125, 9.0*125, 10125, 117125, 12*125, 13*12, 14*125
Open Wrench (20)	6, 7, 8, 9, 10, 11, 12, 13, 14, 15, 16, 17, 18, 19, 21, 22, 24, 27, 30, 32
Ring Wrench (20)	6, 7, 8, 9, 10, 11, 12, 13, 14, 15, 16, 17, 18, 19, 21, 22, 24, 27, 30, 32
Adj Wrench (3)	200, 250, 300
Allen Key (7)	3,4,5,6,8,10,12
Hex Key T-Type (5) With Ball End	3*150, 4*150, 5*150, 6*150, 8*150
Socket 3/8" (17)	6, 7, 8, 9, 10, 11, 12, 13, 15, 14, 16, 17, 18, 19, 20, 21, 22
Allen Socket 3/8" (4)	4*75, 5*75, 6*75, 8*75
Ratchet Wrench (1)	3/8"*200
Extension (2)	3/8*125, 3/8*250
T-Handle (1)	3/8"*200
Socket Wrench (9)	8*200, 10*300, 12*300, 13.300, 14*300, 16*300, 17*300, 18*300, 19*300,
Socket 1/2" (15)	10, 11, 12, 13, 14, 16, 17, 18, 19, 21, 22, 24, 27, 30, 32
Allen Socket 1/2" (5)	4*120,5*120,6120,8120,10120
Ratchet Wrench (1)	1/2"*250
Extensions (2)	1/2"*125, 1/2"*250
L-Handle (1)	120*250
T-Handle (1)	1/2" 200
Combination Plier (2)	160,200
Snipe Nose Side Cutting Plier (2)	160,200
Curved Nose Cutting Plier (2)	160
Diagonal Plier (1)	180
Heavy Duty Diagonal Plier (1)	160
Flat Nose Plier (1)	160
Wire Stripper (1)	300
Water Pump Plier (1)	150
Hacksaw Frame (1)	
Cable Knife(Straight)	
Dismantling Knife(Semicircle)	
Dismantling Knife(Long Hook)	
Cable Knife(Guard)	
Dismantling Knife	
Fluke Multimeter	
Fluke Clampmeter	
Insulated Gloves Class 0	